

Join us in advocating for Public Safety and Preparedness for Extreme Fire Risk in San Leandro

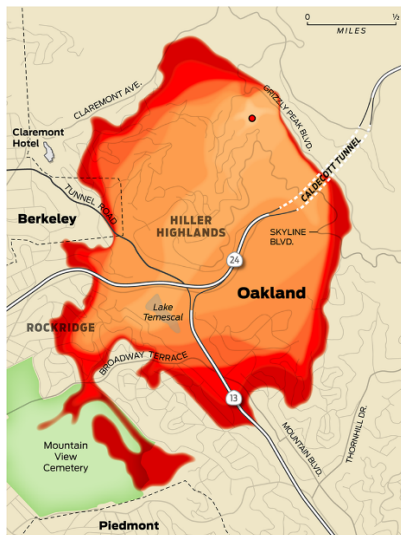
Since January 2023 Lake Chabot Road has been closed due to weather events that caused portions of the hill and road to slide, effectively cutting off a vital evacuation route for emergency response vehicles and residents. This road is a key piece of city infrastructure for emergency response that also links residents with critical medical resources in Castro Valley. This should be of high concern to residents of Bay O Vista, Assumption Parish and Estudillo Estates.

Alameda County has commissioned a publicly available report from national consulting firm **Kittelson Associates**, documenting the extreme risk that Lake Chabot Road poses to San Leandro residents when unavailable for emergency evacuation. Links to this critical information are below:

[Kittelson Report](#)

[CAL Fire Rating](#)

In 1991, the Oakland Hills firestorm killed 25 people and injured 150. Nearly 3000 homes and 437 apartments were destroyed in less than 6 hours. The winds created by the firestorm reached hurricane strength and were the primary cause of uncontrollable fire. Panicked residents were unable to navigate narrow, winding, steep roads and emergency vehicles were unable to do the same from the opposite direction. Successful housing developments are typically well-planned and designed for daily ingress/egress and emergency purposes. Lake Chabot Road and Bay O Vista were designed and planned with this in mind.



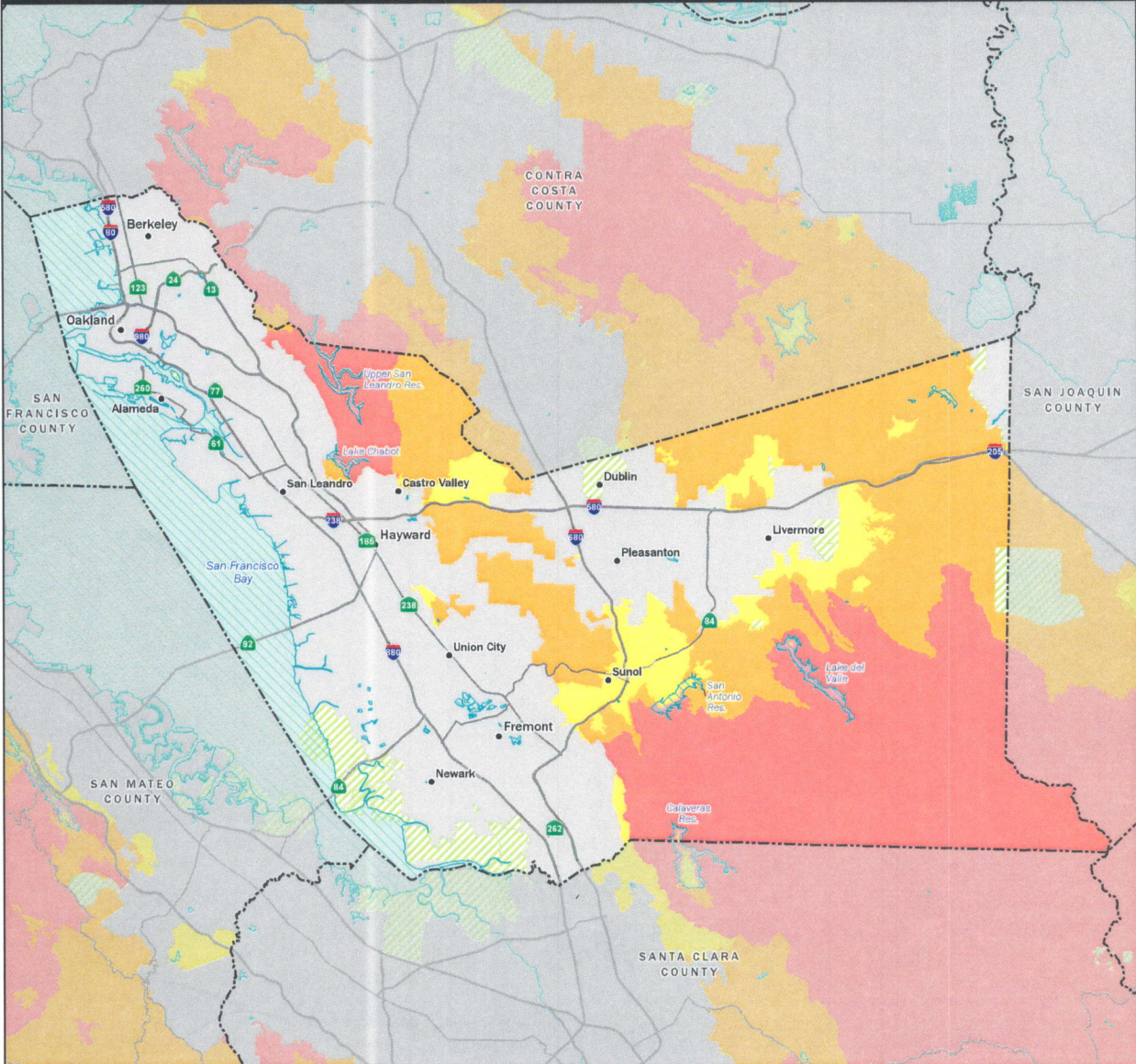
The fire risk in San Leandro is well-documented for thousands of residents who live near a high-fire danger zone. In 1991, the fire started on Grizzly Peak Road and traveled down slope, crossing Highway 13 and into the Rockridge neighborhood. The topography in the hills above San Leandro is very similar to the contributing factors in the Oakland Hills firestorm that severely affected the flatlands.

In addition to the fire risk, 3500 vehicles per day have been re-routed due to the road closure, including through neighborhoods that were not designed for heavy traffic. This has created an unsafe condition and added to the crime rate for neighborhoods, impacting public safety.




We urge you to sign this petition IN SUPPORT of the city to apply for grant funding to restore this vital evacuation route and re-open Lake Chabot Road!

State Responsibility Area Fire Hazard Severity Zones



June 15, 2023

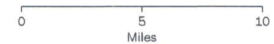


Fire Hazard Severity Zones in State Responsibility Area (SRA)

	Very High	115,809 Acres
	High	108,614 Acres
	Moderate	27,566 Acres

Fire Protection Responsibility Areas (non-SRA)

	Federal Responsibility Area (FRA)
	Local Responsibility Area (LRA)
	Waterbody



Projection: NAD 83 California Teale Albers
Scale: 1:315,000 at 11" x 17"

Public Resources Code 4201-4204 directs the California Department of Forestry and Fire Protection (CAL FIRE) to map fire hazard within State Responsibility Areas (SRA) based on fuel loading, slope, fire weather, and other relevant factors present, including areas where winds have been identified by the department as a major cause of wildfire spread. These zones, referred to as Fire Hazard Severity Zones (FHSZ), classify a wildland zone as Moderate, High, or Very High fire hazard based on the average hazard across the area included in the zone.

Access PDF versions of the maps at <https://osfm.fire.ca.gov/fhsz-maps>. For more information, please visit the Frequently Asked Questions document for the 2023 Fire Hazard Severity Zones at <https://osfm.fire.ca.gov/fhsz> or scan the QR code at right. If you have further questions, please call 916-633-7655 or email FHSZcomments@fire.ca.gov.



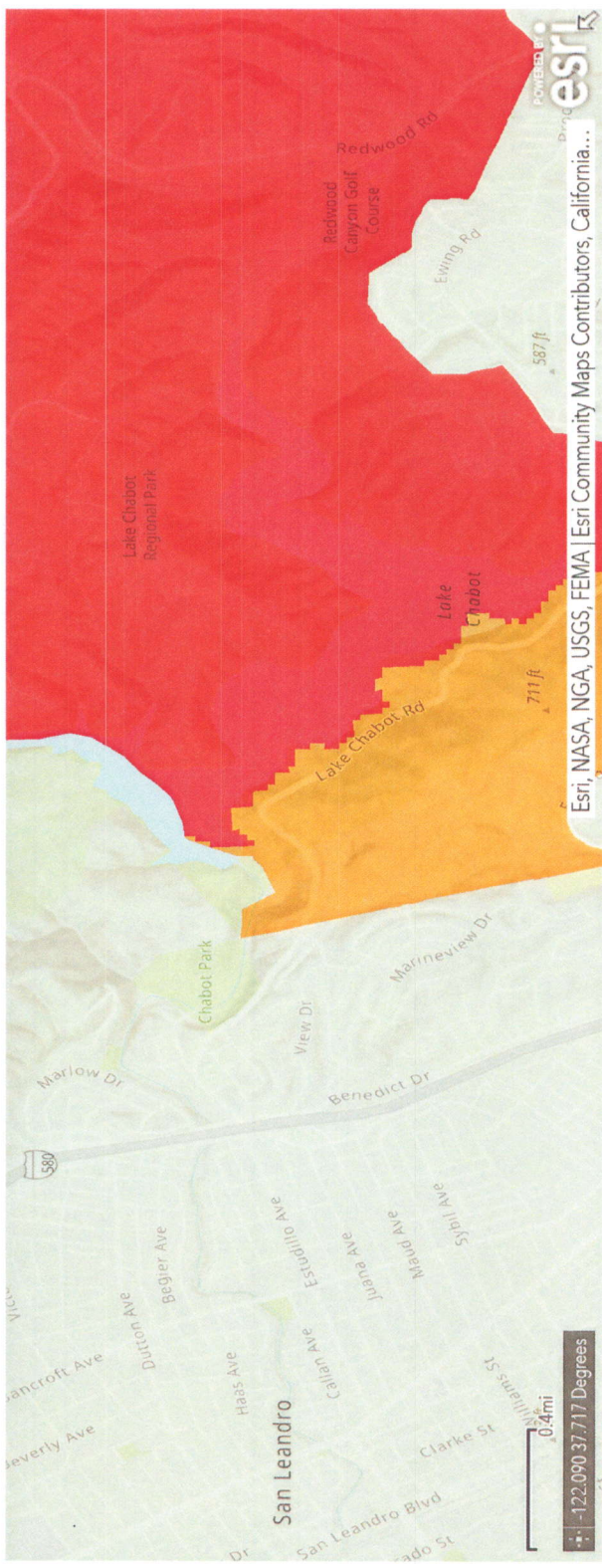
Scan or click the QR code for more information and to visit the interactive FHSZ viewer.

CAL FIRE Home

About Us ▾

Boards & Committees ▾

Divisions ▾



- [PDF Maps of 11/21/22 and 6/15/23 Fire Hazard Severity Zones in SRA](#)
- [Specific Change Maps June 15, 2023](#)
- [Use the interactive viewer to compare where FHSZ has changed in SRA](#)
- [2022 FHSZ in SRA Acreage Change between 11/21/2022 and 6/15/2023](#)
- [FHSZ Maps LRA and SRA \(Current Regulation - 2007 Version\)](#)



FHSZ Viewer

Help

